

# MINI-CASE STUDY

## Florida Municipal Wastewater Facility

### Problem:

The wastewater facility contracted a cleaning company to restore the capacity of its oxidation ditch. The ditch was estimated to have a significant buildup of sand and grit, but the quantity was unknown.

### How SediVision Helped:

SediVision's technology identified 1,335.4 cubic yards of debris and a loss of capacity of 19.9%. The debris height exceeded 10 feet in some locations. The data also revealed that 90% of the material existed in 42% of the tank. With this information, cleaning efforts and costs could be focused on the areas with the most debris.

### Outcome:

The contracted cleaning company could target its efforts on the large piles of material. Although there was a great deal of material in this tank, knowing where it was located helped the cleaning company double its normal productivity level for removing sand and grit. During the cleaning process, SediVision deployed its technology a second time to verify that the heavier inorganics were being removed as intended. Knowing the location of accumulated debris reduced the number of days on-site for the contracted cleaning company and saved money for the facility.

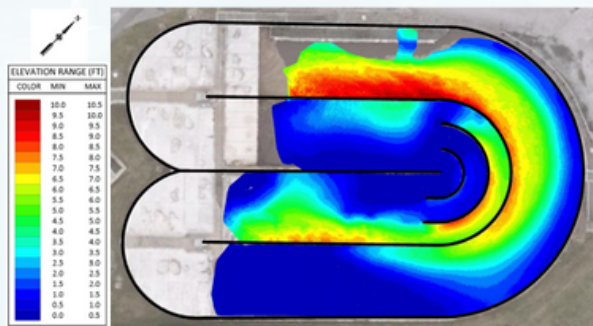


Figure 1: False color elevation map of debris inside the oxidation ditch.

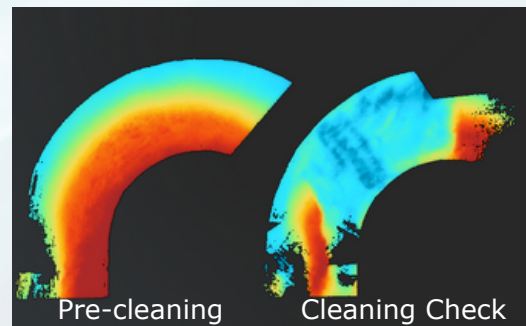


Figure 2: Raw data comparison of oxidation ditch section pre-cleaning and same section during progress check.