

MINI-CASE STUDY

Central Florida - 2 MGD Facility

Problem:

A 2.0 MGD wastewater treatment facility was looking for insight into grit accumulation in its anoxic basins and wet well due to past issues with headworks.

How SediVision Helped:

SediVision's technology located 43.8 cu yds of debris in the north anoxic tank, 25.1 cu yds in the south anoxic tank and 19.2 cu yds in the wet well. Although the wet well contained the least amount of debris, the loss of capacity was the highest at 10.4%. The north and south anoxic tanks had loss of capacities of 3.9% and 2.2% respectively.

Outcome:

SediVision helped the utility identify areas of sediment accumulation. The facility was able to use this information to plan and budget to remove the settled debris.

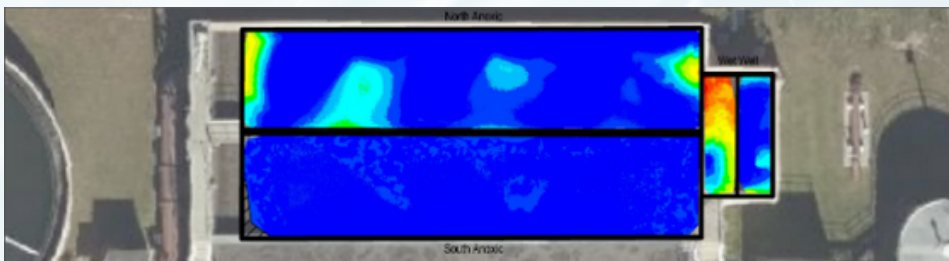


Figure 1: False color elevation map of debris inside of the assessed structures